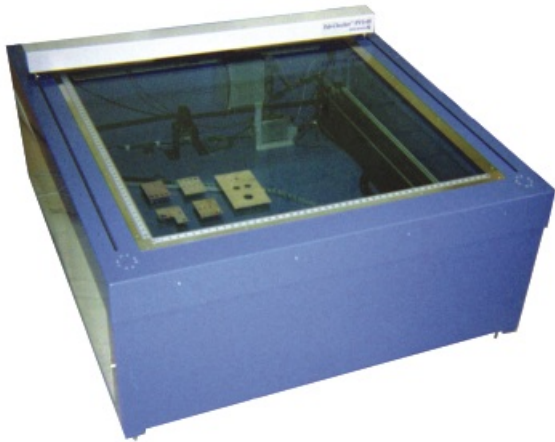


FabChecker™ PVS-48



The **FabChecker** is a state-of-the-art high resolution, large format scanning device, specifically designed to evaluate fabricated 2-dimensional sheet metal parts for accuracy and compliance with specifications.

Parts are scanned using a high-resolution line scan CCD camera, mounted on a precision x-y table. The scanned part is compared with the original CAD drawing (in .DXF format). Dimensions not within the specified tolerances are identified; these are clearly displayed on the monitor as a different color from the remainder of the drawing, and an SPC compliance report is generated.

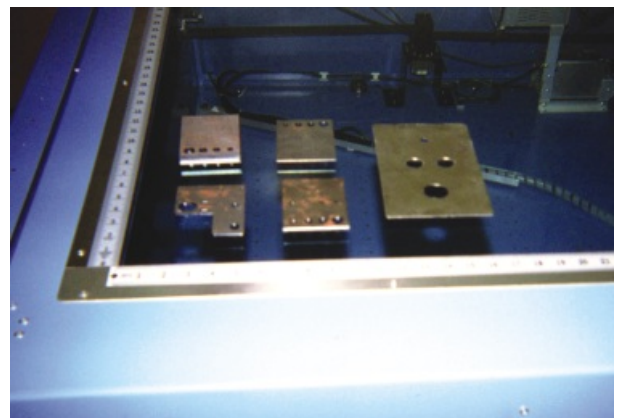
Total processing time for a 48" x 48" part scanned at a resolution of +/- .001" is 240 seconds, significantly less than the 30-45 minutes it would take to do this manually (smaller parts can be scanned and processed much more rapidly). Using the **FabChecker**, first part inspections are performed quickly, easily, and accurately, with excellent documentation. This decreases idle time on the NC punch press/laser/plasma/water jet, and correspondingly increases factory throughput.

The **FabChecker** also is ideal for reverse engineering of sheet metal flat parts, whereby a CAD drawing is quickly and accurately generated from a sample part where no CAD drawing exists. This can save hours from the process of manually measuring the part to create a CAD drawing. The **FabChecker** generated .DXF file can then be exported into a CAD package that supports drawing interchange format (.DXF) files.

The **FabChecker** is extremely cost-effective, saving the fabrication shop through:

- Reduced idle time of NC punch/laser/plasma/water jet cutting machines while waiting for manual first part inspection
- Improved accuracy of first part inspection leads to decreased scrap and reduced requirements for rework
- Increased factory productivity

*In fact, in a typical fabrication shop performing 10 first part inspections per day, the resultant time-savings from using the **FabChecker** translates to a time to payback of the total investment of <10 months!*



Features:

- Scans flat sheet metal parts for first part inspection, quality assurance, reverse engineering
- Accuracy to +/- .001"
- Captures 15 million data points/second
- Scans parts to 1" thickness
- Fast, high resolution scans/processing (48 x 48" with +/- .001 accuracy in <240 seconds, less time for smaller parts)
- Uses a high resolution line scan camera to accurately, quickly obtain image
- User definable scan size (reduces scanning time)
- Scans multiple parts simultaneously
- Digitized imaging from the high resolution line scan CCD camera (captures 15 million data points/second), x-y table composed of linear bearing rails with stepper motor drive and high resolution position sensing using precision encoders
- Network enabled PC running Windows 2000 or Windows NT
- Sealed camera compartment keeps internal components dust-free
- SPC report generation for specification compliance

Product Specifications:

Dimension (WxDxH)..... 62 5/64 x 68.25 x 32 inches
 Weight..... 963 lbs.
 Electrical..... 117 Volts, 60 Hz, 6 Amps
 Scan bed..... 48.25 x 48.25 inches
 Accuracy..... +/- .001"
 Maximum part size..... Virtually unlimited, with software incorporated knitting feature allowing combination of adjacent scans

Also available in other voltages - contact factory for details

Patent pending

About S&S Par Scientific, Inc.

S&S Par Scientific, Inc. was formed in the 1980's as a company involved in the development and manufacture of products used to improve the accuracy of radiation therapy delivery. These products include several models of 3-D scanning equipment to quantify post surgical tissue defects in patients, and use this data to accurately plan dosage distribution of the radiation treatments. Our hallmark has been the manufacture of trouble-free, long service life products, with excellent customer service and unsurpassed engineering support. We have facilities in New York, Pennsylvania, Texas, Denmark and Switzerland. FabChecker is a trademark of S&S Par Scientific.



10625 Telge Road, Houston, TX 77095
 800-231-1747 281-815-1300 281-815-1444 fax
 e-mail: sspar@radx.com
www.sspar.com