

HEAVY DUTY 21.5" DELUXE DARKROOM BENCH CABINETS



DOUBLE WALL CONSTRUCTION / WELDED SEAMS AND CORNERS / 18 GAUGE HEAVY DUTY STEEL

MODULAR DESIGN FOR CUSTOM INSTALLATION

BUILT IN BASES

CUSTOM FORMICA TOPS AVAILABLE

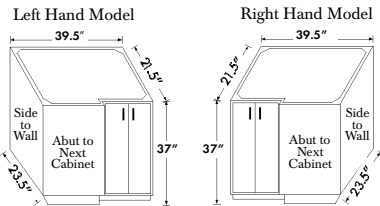


Shown: 68C, 68M, 68Z, 68S, and 68P

Deluxe darkroom cabinets are made of formed and welded cold rolled steel. Cabinet tops are open and perforated for easy installation of optional formica covered cabinet tops. All inner side walls of these double walled cabinets have holes to facilitate side by side mounting. Each cabinet can stand independently or in combination with any other cabinet in this series. All deluxe cabinets have built in bases. Choose from any combination cabinets below and add in any *Film Loading Bin* to make a complete darkroom work station. See page G-1 to select the appropriate bin and base.

Optional 68H Formica Counter Tops; 68T Counter Top End Support; 68TA Wall Scribe Strips; 68TB Filler and 68TC Corner Filler

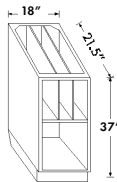
Finish: All Bins and Bases: Standard finish - light gray baked enamel. Formica tops are white.



CORNER CABINET

EXTERIOR DIM			CORNER CAB DEPTH	APPROX. SHIP WT	CATALOG NO.
WIDTH	HGT	CAB.W/DOOR DEPTH			
39.5"	37"	21.5"	23.5	95 lbs	68C

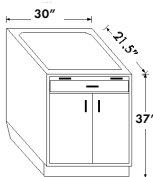
Corner Cabinets are designed to fill in the corner of an "L" shaped room layout. Double doors open and permit storage on two full depth adjustable shelves. **A sketch is required with order showing location of cabinet** to determine left or right model.



CASSETTE CABINET

EXTERIOR DIM			APPROX. SHIP WT	CATALOG NO.
WIDTH	HGT	DEPTH		
18"	37"	21.5"	75 lbs	68M

Cassette Cabinets store cassettes on edge in the upper three compartments. The lower compartment is for general utility.

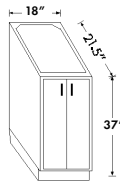


WORK BENCH UTILITY CABINET

EXTERIOR DIM			APPROX. SHIP WT	CATALOG NO.
WIDTH	HGT	DEPTH		
30"	37"	21.5"	165 lbs	68Z

Work Bench Utility Cabinets: A complete workbench and utility cabinet with full size pullout shelf, drawer with ball bearing suspension and double doors that open to permit storage on two full depth adjustable shelves. All steel construction.

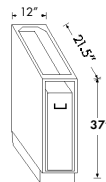
HEAVY DUTY 21.5" DELUXE DARKROOM BENCH CABINETS



UTILITY CABINET

EXTERIOR DIM			APPROX.	CATALOG
WIDTH	HGT	DEPTH	SHIP WT	NO.
18"	37"	21.5"	77 lbs	68N

Utility Cabinets: Double doors open and permit storage on two full depth adjustable shelves. All steel construction.



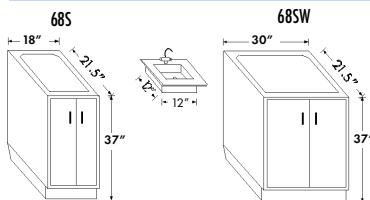
WASTE BIN / IDENTIFIER CABINET

EXTERIOR DIM			APPROX.	CATALOG
WIDTH	HGT	DEPTH	SHIP WT	NO.
12"	37"	21.5"	75 lbs	68P
12"	37"	21.5"	75 lbs	68PX

Waste Bin / Identifier Cabinet:

68P: Deposit waste through a cutout in the counter top. All steel construction. Inner steel waste bin has a lift handle for easy removable.

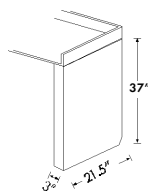
68PX: Designed to have a film identification printer recessed into the counter top and cabinet of this unit. All steel construction.



SINK CABINET

EXTERIOR DIM			APPROX.	CATALOG
WIDTH	HGT	DEPTH	SHIP WT	NO.
18"	37"	21.5"	77 lbs	68S
30"	37"	21.5"	95 lbs	68SW

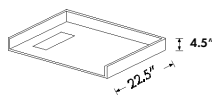
Sink Cabinets come with a stainless steel sink complete with drain, tail piece, faucets and spigot. Double doors open and permit storage on two full depth adjustable shelves. All steel construction.



CABINET END SUPPORT

EXTERIOR DIM			APPROX.	CATALOG
WIDTH	HGT	DEPTH	SHIP WT	NO.
3"	37"	21.5"	30 lbs	68T

Cabinet End Support: This all steel leg is available to support the formica top beyond the end of a cabinet when a longer counter top is desired.



FORMICA COUNTER TOP

EXTERIOR DIM			APPROX.	CATALOG
LENGTH	HGT	DEPTH	SHIP WT	NO.
To Order	4.5"	21.5"	Custom	68H

Formica Counter Tops are custom made for all types of darkrooms and loading benches. Usual construction includes white formica on .75" chipboard with a 4.5" high backsplash and end returns. 22.5" depth allows for a 1" overhang at the front of the cabinet. Custom cut outs are made for waste bins, ID printers, etc. When ordering, please provide a drawing or sketch.

FINISHING FILLER PIECES

	CATALOG NO.
Wall Scribe Strip	68TA
Cabinet Filler	68TB
Corner Filler	68TC

Custom made fillers, scribe strips or corners are available to complete each installation. Made to match cabinet profile, they are designed to close any spaces between cabinets or a cabinet and a wall for a finished smooth look. The Corner Filler can be used in a corner as an alternative to a corner cabinet.

Contact factory for engineering assistance.

15" COMPACT DARKROOM BENCH CABINETS



MIX AND MATCH COMBINATION
 ONLY 15" DEEP COMPACT DESIGN - LOW COST
 20 GAUGE ALL STEEL CONSTRUCTION

Designed expressly for the X-Ray department, these steel cabinets form the perfect work station for any large or small darkroom, film loading station, etc. While occupying a minimum of floor space, they will hold all of the film, cassettes and utility items used by the X-Ray department. The compact design and low cost make them the ideal choice for most X-Ray installations.

Choose from any combination of the six cabinets below and add in any *Film Loading Bin* (page G-1) and *Drier* (page G-14) to make a complete darkroom work station.

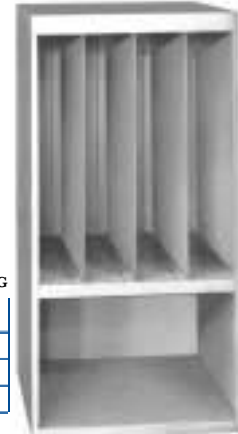
Optional *formica tops* and *all steel bases* are available for each unit. For a finished, built-in look, a custom formica One Piece Top (with back splash [118G] or without back splash [118F]) and/or One Piece steel Custom Base [118B] are available for any combination of units.

Finish: All Bins and Bases: Standard finish - light gray baked enamel. Formica tops are white.



THREE COMPARTMENT CASSETTE STORAGE CABINET

DESCRIPTION	EXTERIOR DIM			APPROX. CATALOG	
	WIDTH	HGT	DEPTH	SHIP WT	NO.
Cassette Cabinet	11"	33"	15"	35 lbs	160
W/Base	11"	36.5"	15"	50 lbs	160B
W/Top	11"	34"	15"	45 lbs	160T
W/Base & Top	11"	37.5"	15"	60 lbs	160BT



FOUR COMPARTMENT CASSETTE STORAGE CABINET

DESCRIPTION	EXTERIOR DIM			APPROX. CATALOG	
	WIDTH	HGT	DEPTH	SHIP WT	NO.
Cassette Cabinet	16"	33"	15"	50 lbs	161
W/Base	16"	36.5"	15"	65 lbs	161B
W/Top	16"	34"	15"	60 lbs	161T
W/Base & Top	16"	37.5"	15"	75 lbs	161BT



OPEN FRONT UTILITY CABINET

DESCRIPTION	EXTERIOR DIM			APPROX. CATALOG	
	WIDTH	HGT	DEPTH	SHIP WT	NO.
Cabinet	29"	33"	15"	50 lbs	890
W/Base	29"	36.5"	15"	65 lbs	890B
W/Top	29"	34"	15"	60 lbs	890T
W/Base & Top	29"	37.5"	15"	75 lbs	890BT



DOUBLE DOOR, TWO SHELF CABINET

DESCRIPTION	EXTERIOR DIM			APPROX. CATALOG	
	WIDTH	HGT	DEPTH	SHIP WT	NO.
Cabinet	29"	33"	15"	60 lbs	891
W/Base	29"	36.5"	15"	75 lbs	891B
W/Top	29"	34"	15"	70 lbs	891T
W/Base & Top	29"	37.5"	15"	85 lbs	891BT



TWO SHELF UTILITY CABINET

DESCRIPTION	EXTERIOR DIM			APPROX. CATALOG	
	WIDTH	HGT	DEPTH	SHIP WT	NO.
Cabinet	16"	33"	15"	50 lbs	893
W/Base	16"	36.5"	15"	65 lbs	893B
W/Top	16"	34"	15"	60 lbs	893T
W/Base & Top	16"	37.5"	15"	75 lbs	893BT



WASTE BIN CABINET

DESCRIPTION	EXTERIOR DIM			APPROX. CATALOG	
	WIDTH	HGT	DEPTH	SHIP WT	NO.
Cabinet	16"	33"	15"	65 lbs	894
W/Base	16"	36.5"	15"	80 lbs	894B
W/Top	16"	34"	15"	75 lbs	894T
W/Base & Top	16"	37.5"	15"	90 lbs	894BT

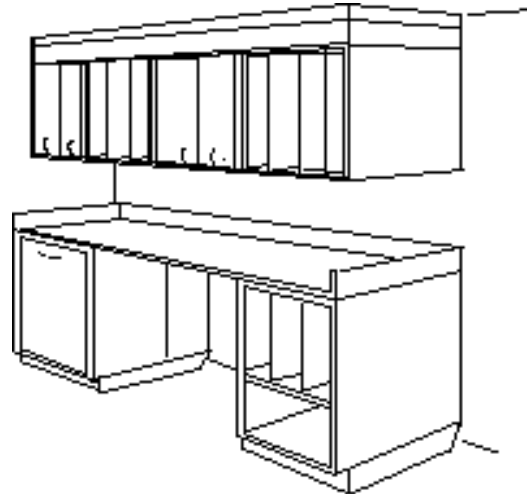
* **Optional Items:** Custom one piece **Steel Base** - 118B; Custom one piece **Flat Formica Top** - 118F; Custom one piece **Formica Top with Back Splash** - 118G; **Counter Top End Support** - 115; Factory Assembled and Crated for **One Piece Installation** - 118P; **Film Dryer** see page G-14

DELUXE WALL CABINETS

DOUBLE WALL WELDED SEAM CONSTRUCTION
 ATTRACTIVE WALL MOUNTED UNITS
 18 GAUGE HEAVY DUTY STEEL
 MODULAR DESIGN FOR CUSTOM INSTALLATION
 SAVES FLOOR SPACE

Ideal for large or small darkrooms, Deluxe Wall Cabinets provide additional storage space without using valuable floor space. They are the perfect mate to either the 15" Compact Darkroom Bench Cabinets or Heavy Duty 21.5" Deluxe Darkroom Bench Cabinets. All inner side walls of these double walled cabinets have holes to facilitate side by side mounting. Choose from any combination of wall cabinets below and add in any *Cassette Transfer Cabinet* (page G-3, 4) to make a complete darkroom work station.

Finish: Standard finish - light gray baked enamel. Formica tops are white.



Two sizes of **Wall Cassette Cabinets** are available, 18" wide with three compartments and 24" wide with four compartments. Both cabinets are all steel double wall construction with keyholes provided in the rear for easy hanging and holes in the inner side walls to facilitate bolting units side by side.

WALL CASSETTE CABINET

DESCRIPTION	EXTERIOR DIM			APPROX. SHIP WT	CATALOG NO.
	WIDTH	HEIGHT	DEPTH		
3 Compartment	18"	22"	16"	40 lbs	159
4 Compartment	24"	22"	16"	51 lbs	158

Wall Utility Cabinets are all steel double wall construction with keyholes provided in the rear for easy hanging and holes in the inner side walls to facilitate bolting units side by side. Double doors, door catch and two adjustable shelves come with this cabinet.

WALL UTILITY CABINET

EXTERIOR DIM			APPROX. SHIP WT	CATALOG NO.
WIDTH	HEIGHT	DEPTH		
18"	22"	16"	44 lbs	157

