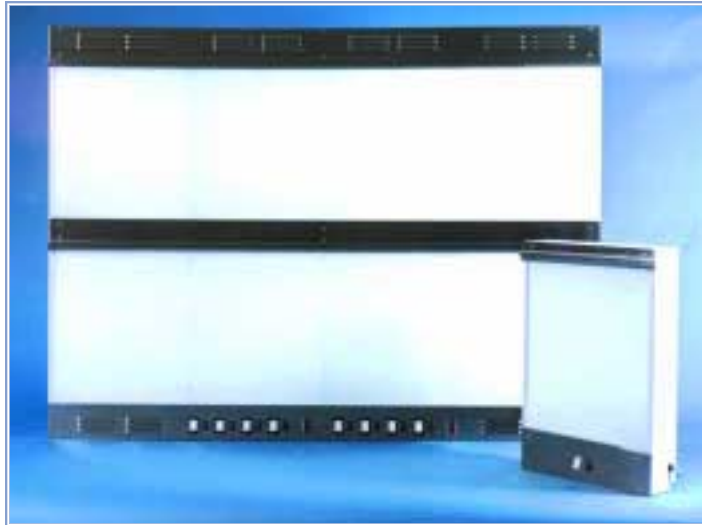


# 2X SERIES / 4X HI - LOW



## ILLUMINATORS



Desk or Surface Mount

The **2X Series** and the **4X Hi-Low Series** Illuminators are our top of the line illuminators. Their classic look is matched with **superior light distribution**. Available for **surface** or **recessed** mounting in sizes from one to six banks wide and one or two tiers high, they can be combined with our Modular Mobile System, Mobile Stand, Console Arms, Angulated Viewing System, or Corner Modules to form a state of the art viewing station.

*Low leakage instant on ballasts*, internal dividers (to prevent light "spill over"), centered cluster switches, *optional film activated switches*, one piece plexiglass fronts and continuous stainless steel *gravity film grips* are supplied as standard with this series. A master on/off switch is also supplied for each tier of three or more banks.

Each tier of the illuminator is of one piece heavy duty steel construction. Professionally welded and ground seams on this viewbox provide exceptional rigidity and strength. Distracting light leakage has been eliminated.

Recessed models come complete with recessing flanges (in white baked enamel) permanently welded to the case. Holes are provided in the flange for ease of mounting.

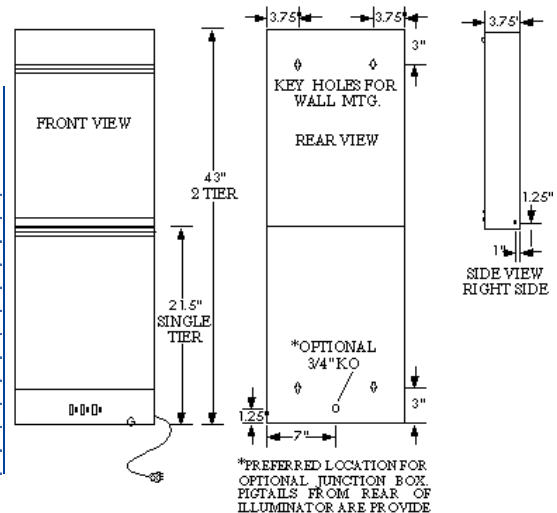
The **4X Hi-Low Illuminator Series** has a unique *four tube dual brightness system* which provides *two levels of light intensity*. Each 14"x17" viewing area has four F15T8/D fluorescent tubes, two *low leakage thermally protected ballasts* and specially designed reflectors. On the low setting light distribution is far superior to conventional two tube viewers. When additional illumination is required a touch of a switch increases the light output of the four lamps to their maximum brightness. Each viewing section is controlled by an on/off rocker switch and a Hi-Lo brightness selector switch. A master on/off switch is also supplied for each tier of three or more banks. All Switches are grouped together and mounted in the center of the front panel on the bottom tier.

### DESK OR SURFACE MOUNTED MODELS

DEPTH OF VIEWERS: 3.75"

VIEWING AREA	EXTERIOR DIM		APPROX. SHIP WT	2X SERIES TWO LAMP		4X SERIES FOUR LAMP	
	WIDTH	HGT		STANDARD SWITCHES	AUTO SWITCHES	STANDARD SWITCHES	AUTO SWITCHES
Single Bank 14"x17"	14.75"	21.5"	30 lbs	2X0041	2X0001	4X0041	4X0001
Two Bank 28"x17"	28.75"	21.5"	60 lbs	2X0042	2X0002	4X0042	4X0002
Three Bank 42"x17"	42.75"	21.5"	90 lbs	2X0043	2X0003	4X0043	4X0003
Four Bank 56"x17"	56.75"	21.5"	120 lbs	2X0044	2X0004	4X0044	4X0004
Five Bank 70"x17"	70.75"	21.5"	150 lbs	2X0045	2X0005	4X0045	4X0005
Six Bank 84"x17"	84.75"	21.5"	160 lbs	2X0046	2X0006	4X0046	4X0006
<b>TWO TIER</b>							
1 over 1 2 x 14"x17"	14.75"	43"	60 lbs	2X0051	2X0011	4X0051	4X0011
2 over 2 2 x 28"x17"	28.75"	43"	120 lbs	2X0052	2X0012	4X0052	4X0012
3 over 3 2 x 42"x17"	42.75"	43"	180 lbs	2X0053	2X0013	4X0053	4X0013
4 over 4 2 x 56"x17"	56.75"	43"	240 lbs	2X0054	2X0014	4X0054	4X0014
5 over 5 2 x 70"x17"	70.75"	43"	300 lbs	2X0055	2X0015	4X0055	4X0015
6 over 6 2 x 84"x17"	84.75"	43"	360 lbs	2X0056	2X0016	4X0056	4X0016

ALL MEASUREMENTS ARE ± 1/16"



The **2X Illuminator Series** provides bright uniform lighting with two F15T8/D fluorescent tubes in each 14"x17" viewing area, and specially designed reflectors. Low leakage thermally protected ballasts provide instant flicker free starting. Each viewing area is controlled by an on/off rocker switch. A master on/off switch is also supplied for each tier of 3 or more banks and all switches are grouped together and mounted in the center of the front panel on the bottom tier.



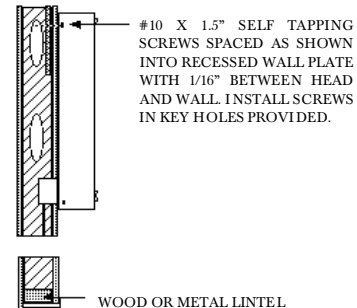
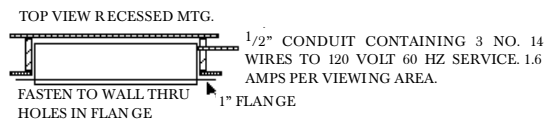
Recessed Mount: 4X0034

### RECESSED MODELS

DEPTH OF VIEWERS: 3.75"

VIEWING AREA	EXTERIOR DIM WIDTH	HGT	WALL OPENING	APPROX. SHIP WT	2X SERIES TWO LAMP		4X SERIES FOUR LAMP	
					STANDARD SWITCHES	AUTO SWITCHES	STANDARD SWITCHES	AUTO SWITCHES
Single Bank 14"x17"	14.75"	21.5"	15"X21.75"	30 lbs	2X0061	2X0021	4X0061	4X0021
Two Bank 28"x17"	28.75"	21.5"	29"X21.75"	60 lbs	2X0062	2X0022	4X0062	4X0022
Three Bank 42"x17"	42.75"	21.5"	43"X21.75"	90 lbs	2X0063	2X0023	4X0063	4X0023
Four Bank 56"x17"	56.75"	21.5"	57"X21.75"	120 lbs	2X0064	2X0024	4X0064	4X0024
Five Bank 70"x17"	70.75"	21.5"	71"X21.75"	150 lbs	2X0065	2X0025	4X0065	4X0025
Six Bank 84"x17"	84.75"	21.5"	85"X21.75"	160 lbs	2X0066	2X0026	4X0066	4X0026
<b>TWO TIER</b>								
1 over 1 2 x 14"x17"	14.75"	43"	15"X43.25"	60 lbs	2X0071	2X0031	4X0071	4X0031
2 over 2 2 x 28"x17"	28.75"	43"	29"X43.25"	120 lbs	2X0072	2X0032	4X0072	4X0032
3 over 3 2 x 42"x17"	42.75"	43"	43"X43.25"	180 lbs	2X0073	2X0033	4X0073	4X0033
4 over 4 2 x 56"x17"	56.75"	43"	57"X43.25"	240 lbs	2X0074	2X0034	4X0074	4X0034
5 over 5 2 x 70"x17"	70.75"	43"	71"X43.25"	300 lbs	2X0075	2X0035	4X0075	4X0035
6 over 6 2 x 84"x17"	84.75"	43"	85"X43.25"	360 lbs	2X0076	2X0036	4X0076	4X0036

ALL MEASUREMENTS ARE ± 1/16"



**Finish:** White Baked Enamel, Stainless Steel Trim (recessing flanges are white baked enamel)

**Electrical:** Viewers operate on 120 volt, 60 Hz, 1.6 Amps AC per viewing area. Surface mounting models are supplied with a 6' three conductor line cord (see diagram for wiring locations). Recessed models come with BX connectors. For special voltages consult factory.

\* **Optional Items:** Modular Mobile system (pg. B-23), mobile stand, console arms, angulated viewing system (pg. B-25), hinge kits and corner modules (pg. B-24), hospital grade plugs (pg. B-30).