

## 14" X 36" SURFACE OR RECESSED

### SURFACE MOUNTED MODELS

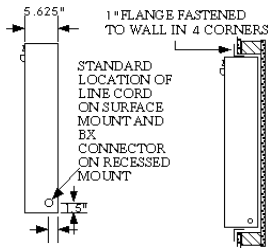
DEPTH OF VIEWERS: 5.25"

VIEWING AREA	EXTERIOR DIM WIDTH	HGT	APPROX SHIP WT	CATALOG NO.
Single Bank 14"x36"	15.625"	38.375"	36 lbs	101600
Two Bank 28"x36"	29.625"	38.375"	65 lbs	101610
Three Bank 42"x36"	43.625"	38.375"	120 lbs	101620
Four Bank 56"x36"	57.625"	38.375"	155 lbs	101630

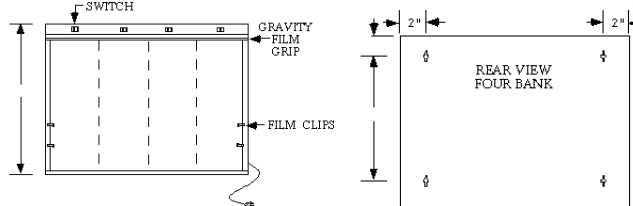
### RECESSED MODELS

VIEWING AREA	EXTERIOR DIM WIDTH	HGT	WALL OPENING WIDTH	HGT	APPROX SHIP WT	CATALOG NO.
Single Bank 14"x36"	15.625"	38.375"	15.875"	38.625"	40 lbs	101640
Two Bank 28"x36"	29.625"	38.375"	29.875"	38.625"	69 lbs	101650
Three Bank 42"x36"	43.625"	38.375"	43.875"	38.625"	125 lbs	101660
Four Bank 56"x36"	57.625"	38.375"	57.875"	38.625"	160 lbs	101670

ALL MEASUREMENTS ARE  $\pm 1/16"$



**\* Option: AUTOMATIC SWITCHES (FILM ACTIVATED AUTO SWITCH)** Automatic switches turn on or off as film is inserted or withdrawn from the film grips. A special three way switch is included with this option for choice of automatic or manual operating modes.



Create a unique mobile unit using the 200 series High Style Base (2 to 6 bank widths) or Desk Base (4 to 6 bank widths). Use only 14"x 36" illuminators or mix with two tier 200 Series Illuminators (double intensity option recommended) (see page B-19)

**Finish:** Light gray baked enamel (on cold rolled **Electrical:** Viewers operate on 120 volt, 60 Hz, .65 Amps AC per viewing area. Supplied with a 6' three conductor line cord (see diagram for wiring locations). Recessed models come with BX connectors. For special voltages consult factory.

**\* Optional Items:** High Style Base, Desk Base (B-19), Hospital grade plugs, switch boxes, 68H custom formica shelf & 68HB wall mounting bracket, and hinge kits. For ordering info. see page B-30

## 14" X 51" SURFACE OR RECESSED

Constructed of heavy gauge cold rolled steel with four F60T12/D daylight fluorescent bulbs per viewing area and internal sectional dividers, these illuminators are ideal for Spine films. An on/off rocker switch is centered on the right front of each viewing area. A gravity film grip, extending the full width of the illuminator, holds the top of the film firmly in place, while a film retainer ledge supports film at the bottom of the viewing area. Three film clips spaced along the sides keep film from buckling. Recessed models are supplied with stainless steel recessing flanges and BX connector. The recessing flanges are provided loose (not attached to the illuminator) to allow for partial recessing in thin walls.

### SURFACE MOUNTED MODELS

DEPTH OF VIEWERS: 5.75"

VIEWING AREA	EXTERIOR DIM WIDTH	HGT	APPROX SHIP WT	CATALOG NO.
Single Bank 14"x51"	16.375"	60.5"	95 lbs	101710
Two Bank 28"x51"	30.375"	60.5"	160 lbs	101720
Three Bank 42"x51"	44.375"	60.5"	240 lbs	101730
Four Bank 56"x51"	58.375"	60.5"	320 lbs	101740

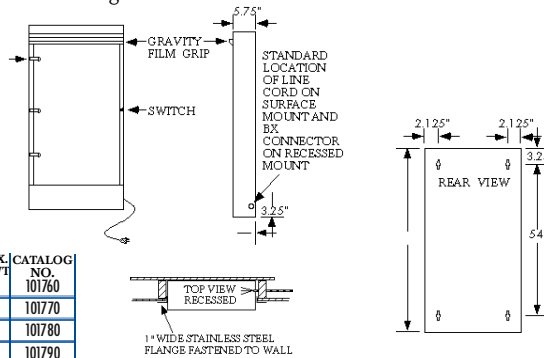
### RECESSED MODELS

VIEWING AREA	EXTERIOR DIM WIDTH	HGT	WALL OPENING WIDTH	HGT	APPROX SHIP WT	CATALOG NO.
Single Bank 14"x51"	16.375"	60.5"	16.625"	60.75"	95 lbs	101760
Two Bank 28"x51"	30.375"	60.5"	30.625"	60.75"	160 lbs	101770
Three Bank 42"x51"	44.375"	60.5"	44.625"	60.75"	240 lbs	101780
Four Bank 56"x51"	58.375"	60.5"	58.625"	60.75"	320 lbs	101790

**Finish:** Light gray baked enamel (on cold rolled steel)

**Electrical:** Viewers operate on 120 volt, 60 Hz, 2.5 Amps AC per viewing area. Supplied with a 6' three conductor line cord (see diagram for wiring locations). Recessed models come with BX connectors. For special voltages consult factory.

**\* Optional Items:** Modular Mobile System (pg B-23), Hospital grade plugs, switch boxes, 68H custom formica shelf & 68HB wall mounting bracket (pg B-30)



ALL MEASUREMENTS ARE  $\pm 1/16"$

