

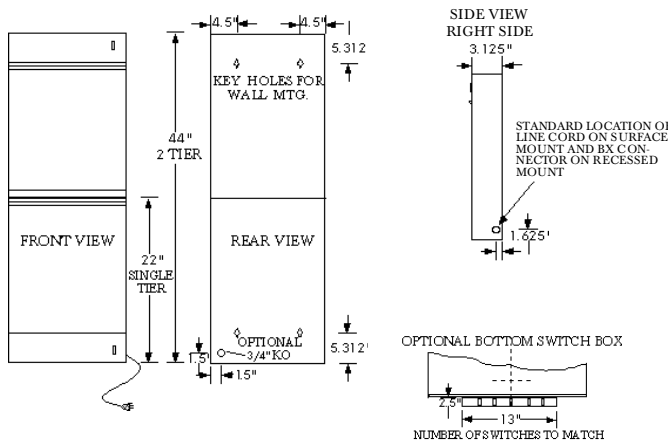
STREAMLINER III SURFACE OR RECESSED

This sleek, slim technically advanced illuminator series fits into any decor. Each 14"x17" viewing area is illuminated by three F15T8/D 15 watt daylight fluorescent bulbs. A unique *metalized mylar reflector* produces bright uniform light distribution. All units in the series are supplied with *hi-power factor low leakage ballasts* which provide instant-on operation. Illuminators come with internal dividers between each 14"x17" viewing section to prevent light spillover. Panoramic (uninterrupted) reflectors are available upon request at time of order.

The Streamliner series is constructed of 18 gauge cold rolled steel. Multiple bank units are constructed of a single housing, not a series of single units bolted together. A *gravity film grip*, extending the full width of the illuminator, holds the top of the film firmly in place, while a film retainer ledge supports film at the bottom of the viewing area. Recessed models come complete with recessing flanges permanently mounted to the case. Holes are provided in the flange for ease of mounting.



Surface Mount: 143001



SURFACE MOUNTED MODELS

VIEWING AREA	EXTERIOR DIM		APPROX. SHIP WT	CATALOG NO.	
	WIDTH	HGT		STANDARD SWITCHES	AUTO SWITCHES
Single Bank	14"	22"	22 lbs	143001	143021
Two Bank	28"	22"	39 lbs	143002	143022
Three Bank	42"	22"	55 lbs	143003	143023
Four Bank	56"	22"	70 lbs	143004	143024
Five Bank	70"	22"	135 lbs	143005	143025
Six Bank	84"	22"	145 lbs	143006	143026
Eight Bank	112"	22"	178 lbs	143008	143028
TWO TIER					
1 over 1 2x 14"x17"	14"	44"	43 lbs	143011	143031
2 over 2 2x 28"x17"	28"	44"	112 lbs	143012	143032
3 over 3 2x 42"x17"	42"	44"	143 lbs	143013	143033
4 over 4 2x 56"x17"	56"	44"	187 lbs	143014	143034
5 over 5 2x 70"x17"	70"	44"	234 lbs	143015	143035
6 over 6 2x 84"x17"	84"	44"	243 lbs	143016	143036
8 over 8 2x 112"x17"	112"	44"	349 lbs	143018	143038

RECESSED MODELS

VIEWING AREA	EXTERIOR DIM		WALL OPENING		APPROX. SHIP WT	STANDARD SWITCHES	AUTO SWITCHES
	WIDTH	HGT	WIDTH	HGT			
Single Bank	14"	22"	14.5"	22.5"	28 lbs	143041	143061
Two Bank	28"	22"	28.5"	22.5"	67 lbs	143042	143062
Three Bank	42"	22"	42.5"	22.5"	88 lbs	143043	143063
Four Bank	56"	22"	56.5"	22.5"	113 lbs	143044	143064
Five Bank	70"	22"	70.5"	22.5"	140 lbs	143045	143065
Six Bank	84"	22"	84.5"	22.5"	150 lbs	143046	143066
Eight Bank	112"	22"	112.5"	22.5"	188 lbs	143048	143068
TWO TIER							
1 over 1 2 x 14"x17"	14"	44"	14.5"	44.5"	65 lbs	143051	143071
2 over 2 2 x 28"x17"	28"	44"	28.5"	44.5"	116 lbs	143052	143072
3 over 3 2 x 42"x17"	42"	44"	42.5"	44.5"	155 lbs	143053	143073
4 over 4 2 x 56"x17"	56"	44"	56.5"	44.5"	191 lbs	143054	143074
5 over 5 2 x 70"x17"	70"	44"	70.5"	44.5"	237 lbs	143055	143075
6 over 6 2 x 84"x17"	84"	44"	84.5"	44.5"	246 lbs	143056	143076
8 over 8 2 x 112"x17"	112"	44"	112.5"	44.5"	369 lbs	143058	143078

ALL MEASUREMENTS ARE ± 1/16"

Finish: White baked enamel (on cold rolled steel).

Electrical: Viewers operate on 120 volt, 60 Hz, .61 Amps AC per viewing area. Surface mounting models are supplied with a 6' three conductor line cord (see diagram for wiring locations). Recessed models come with BX connectors. For special voltages consult factory.

* **Optional Items:** hospital grade plugs, switch boxes, 68H custom formica shelf & 68HB wall mounting bracket (pg. B-30) Modular Mobile system (pg. B-23), mobile stand, console arms, angulated viewing system (pg. B-25), hinge kits and corner modules (pg. B-24).

